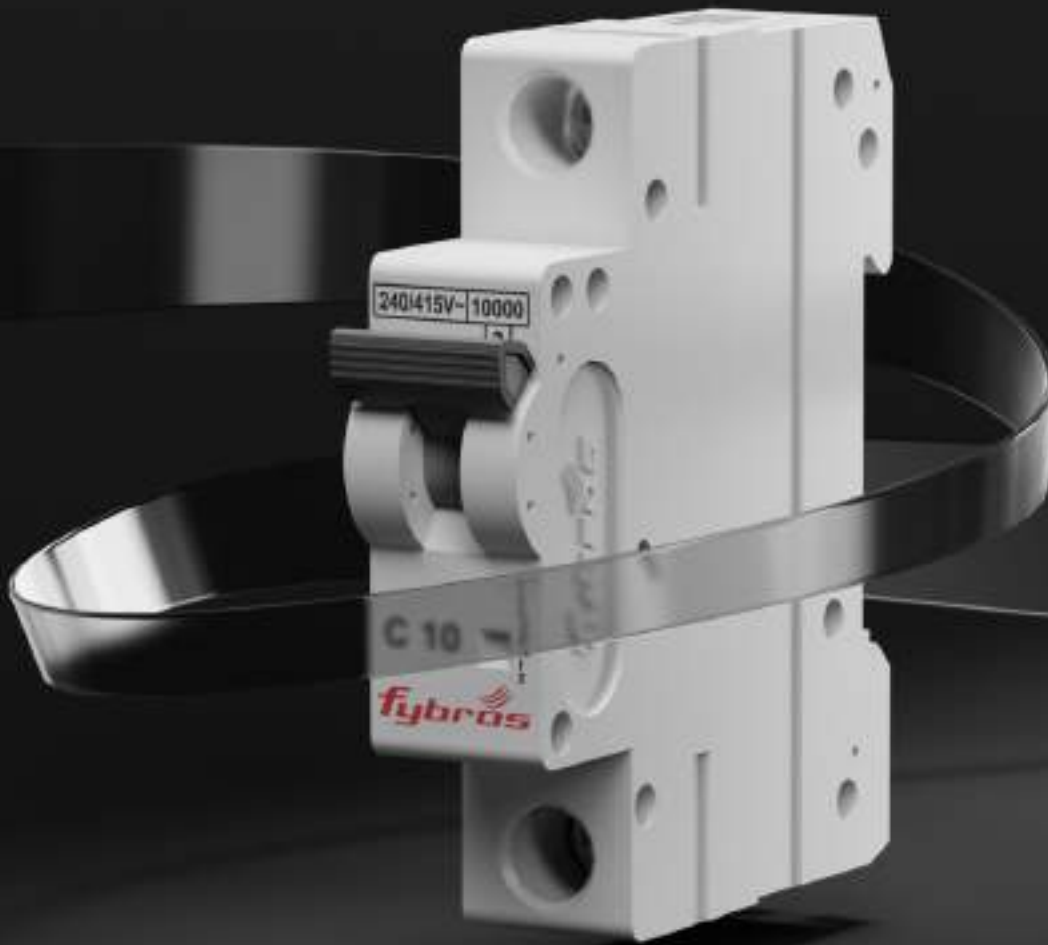


LP- SG02 - 01st JUNE 2024



innovating for a
safer
tomorrow



MY SAFETY MY CHOICE

Advanced
Switchgears
for better power
distribution,
monitoring
& control



C O N T E N T S

Armor Miniature Circuit Breaker	01
Armor Isolator	02
Armor Mini Changeover Switch	02
Armor Residual Current Circuit Breaker	03
Nuevo Re-wireable Switch Fuse Unit	04
Nuevo Changeover Switch (Off Load)	04
Nuevo Re-wireable Kit Kat Fuse Unit	05
Nuevo Sheet Metal Cutout	05
Nuevo Reverse & Forward Switch	05
Nuevo Busbar Chamber	05
Nuevo HRC Fuse Holder	05
Renove Re-wireable Switch Fuse Unit	06
Renove Changeover Switch (Off Load)	06
Magna Distribution Board	07-08
Inspiro Distribution Board	09
AGIO Distribution Board	10
NEX Distribution Board	11
ELITE Distribution Board	12
Renove Mini DP MCB With Enclosure	13

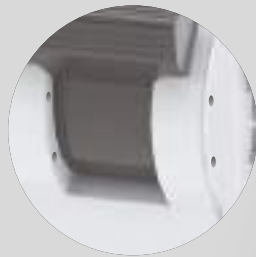


ARMOR

Miniature Circuit Breaker (MCB)



External View



Pad Lock for
MCB dolly/knob
in ON/OFF conditions



Cable Termination
upto 25 mm² Cable



Contact Position
Indicator

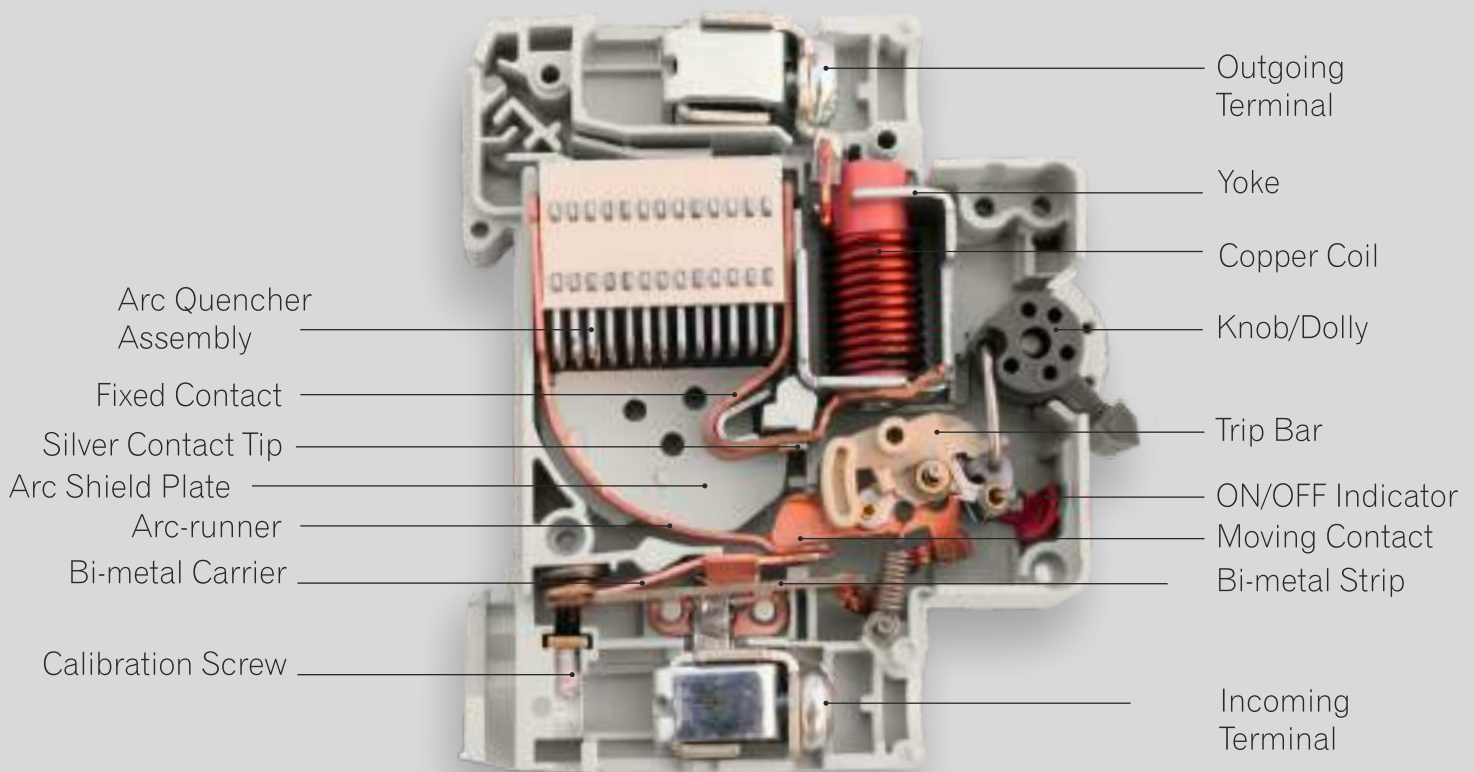


Bi-Stable
Clip

SALIENT FEATURES

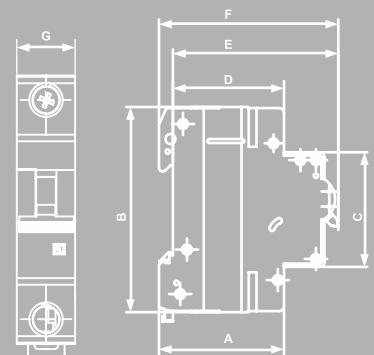
- Suitable for Reverse Feed Connections (Line and Load) & Rated Breaking Capacity 10 kA.
- Silver Graphite contact tips assure Antiweld Property.
- Snap-On-Back mounting for 35mm x 15mm symmetrical DIN rail.
- Terminals suitable for Cable + Bus bar termination.
- Do not tend to bulge or wrap, when high cross sectional cables are terminated.
- Coloured indication of switch-ON and OFF positions.
- Terminal capacity 1-25 mm² & Terminal fastening torque 2.0-2.5 Nm

 **Internal View**



MINIATURE CIRCUIT BREAKER (MCB)

CAT. No.	RATING	TYPE	A	B	C	D	E	F	G
KSG400201/02/03/04/05/06/300/401/402	6A-63A	SP	50	82	45.5	44.4	66.3	71.9	17.50
KSG400601/02/03/04/05/06/700/801/802	6A-63A	SPN	50	82	45.5	44.4	66.3	71.9	35.00
KSG401001/02/03/04/05/06/1100/1201/1202	6A-63A	DP	50	82	45.5	44.4	66.3	71.9	35.00
KSG401401/02/03/04/05/06/1500/1601/1602	6A-63A	TP	50	82	45.5	44.4	66.3	71.9	52.50
KSG401801/02/03/04/05/06/1900/2001/2002	6A-63A	TPN	50	82	45.5	44.4	66.3	71.9	70.00
KSG402201/02/03/04/05/06/2300/2401/2402	6A-63A	FP	50	82	45.5	44.4	66.3	71.9	70.00



*All dimensions in millimeter.
*Dimension may vary ± 0.5 mm.

Miniature Circuit Breaker

10 kA

C - Series



Single Pole



Single Pole - N



Double Pole

Rating / Amps.	Item Code	DLP. Per Unit (₹)	Pkg. Unit	Item Code	DLP. Per Unit (₹)	Pkg. Unit	Item Code	DLP. Per Unit (₹)	Pkg. Unit
6 Amp.	KSG400201	248.00	144	KSG400601	650.00	72	KSG401001	680.00	72
10 Amp.	KSG400202	248.00	144	KSG400602	650.00	72	KSG401002	680.00	72
16 Amp.	KSG400203	248.00	144	KSG400603	650.00	72	KSG401003	680.00	72
20 Amp.	KSG400204	248.00	144	KSG400604	650.00	72	KSG401004	680.00	72
25 Amp.	KSG400205	248.00	144	KSG400605	650.00	72	KSG401005	680.00	72
32 Amp.	KSG400206	248.00	144	KSG400606	650.00	72	KSG401006	680.00	72
40 Amp.	KSG400300	370.00	144	KSG400700	760.00	72	KSG401100	820.00	72
63 Amp.	KSG400402	415.00	144	KSG400802	885.00	72	KSG401202	960.00	72

Miniature Circuit Breaker

10 kA

C - Series



Three Pole



Three Pole - N



Four Pole

Rating / Amps.	Item Code	DLP. Per Unit (₹)	Pkg. Unit	Item Code	DLP. Per Unit (₹)	Pkg. Unit	Item Code	DLP. Per Unit (₹)	Pkg. Unit
6 Amp.	KSG401401	985.00	48	KSG401801	1300.00	36	KSG402201	1340.00	36
10 Amp.	KSG401402	985.00	48	KSG401802	1300.00	36	KSG402202	1340.00	36
16 Amp.	KSG401403	985.00	48	KSG401803	1300.00	36	KSG402203	1340.00	36
20 Amp.	KSG401404	985.00	48	KSG401804	1300.00	36	KSG402204	1340.00	36
25 Amp.	KSG401405	985.00	48	KSG401805	1300.00	36	KSG402205	1340.00	36
32 Amp.	KSG401406	985.00	48	KSG401806	1300.00	36	KSG402206	1340.00	36
40 Amp.	KSG401500	1305.00	48	KSG401900	1595.00	36	KSG402300	1605.00	36
63 Amp.	KSG401602	1555.00	48	KSG402002	1900.00	36	KSG402402	1905.00	36

Isolator



Double Pole



Three Pole



Four Pole

Rating / Amps.	Item Code	DLP. Per Unit (₹)	Pkg. Unit	Item Code	DLP. Per Unit (₹)	Pkg. Unit	Item Code	DLP. Per Unit (₹)	Pkg. Unit
25 Amp.	KSG402500	390.00	72	KSG403100	650.00	48	KSG403700	860.00	36
40 Amp.	KSG402600	405.00	72	KSG403200	670.00	48	KSG403800	895.00	36
63 Amp.	KSG402700	595.00	72	KSG403300	910.00	48	KSG403900	1280.00	36
100 Amp.	KSG402900	745.00	72	KSG403500	1065.00	48	KSG404100	1405.00	36

Mini Changeover Switch



Double Pole



Four Pole

Rating / Amps.	Item Code	DLP. Per Unit (₹)	Pkg. Unit	Item Code	DLP. Per Unit (₹)	Pkg. Unit
25 Amp.	KSG404300	1045.00	72	KSG404600	1870.00	36
40 Amp.	KSG404400	1105.00	72	KSG404700	1965.00	36
63 Amp.	KSG404500	1345.00	72	KSG404800	2400.00	36

Residual Current Circuit Breaker (RCCB)



Double Pole

Rating / Amps.	Item Code	DLP. Per Unit (₹)	Sensitivity	Item Code	DLP. Per Unit (₹)	Sensitivity	Item Code	DLP. Per Unit (₹)	Sensitivity	Pkg. Unit
25 Amp.	KSG404902	2050.00	30 mA	KSG405402A	2050.00	100 mA	KSG405402B	2050.00	300 mA	72
40 Amp.	KSG405000	2050.00	30 mA	KSG405501A	2050.00	100 mA	KSG405501B	2050.00	300 mA	72
63 Amp.	KSG405100	2850.00	30 mA	KSG405601A	2730.00	100 mA	KSG405601B	2730.00	300 mA	72
80 Amp.	KSG405200	3985.00	30 mA	KSG405701A	3810.00	100 mA	KSG405701B	3810.00	300 mA	72
100 Amp.	KSG405300	4100.00	30 mA	KSG405801A	3895.00	100 mA	KSG405801B	3895.00	300 mA	72



Four Pole

Rating / Amps.	Item Code	DLP. Per Unit (₹)	Sensitivity	Item Code	DLP. Per Unit (₹)	Sensitivity	Item Code	DLP. Per Unit (₹)	Sensitivity	Pkg. Unit
25 Amp.	KSG405902	2545.00	30 mA	KSG406402A	2545.00	100 mA	KSG406402B	2545.00	300 mA	36
40 Amp.	KSG406000	2545.00	30 mA	KSG406501A	2545.00	100 mA	KSG406501B	2545.00	300 mA	36
63 Amp.	KSG406100	3140.00	30 mA	KSG406601A	3035.00	100 mA	KSG406601B	3035.00	300 mA	36
80 Amp.	KSG406200	4100.00	30 mA	KSG406701A	4275.00	100 mA	KSG406701B	4275.00	300 mA	36
100 Amp.	KSG406300	4390.00	30 mA	KSG406801A	4500.00	100 mA	KSG406801B	4500.00	300 mA	36



fybrós



NUEVO

Rewireable Switch Fuse (Single Break)
Change Over Switch (Off Load)



Rewireable Switch Fuse (Single Break)

Item Code	Rating / Amps.	Pkg. Unit	DLP. Per Unit (₹)
SPN			
KSG2051	16A / 240V.	18	810.00
KSG2052	32A / 240V.	8	1710.00
DP			
KSG2053	16A / 240V.	18	840.00
KSG2054	32A / 240V.	8	1825.00
KSG2078	63A / 240V.	4	4465.00
TP			
KSG2055	16A / 415V.	6	2215.00
KSG2056	32A / 415V.	4	2860.00
KSG2057	63A / 415V.	2	6830.00
KSG2058	100A / 415V.	1	13285.00
KSG2059	200A / 415V.	1	17665.00
TPN			
KSG2055(N)	16A / 415V.	6	2290.00
KSG2056(N)	32A / 415V.	4	2930.00
KSG2057(N)	63A / 415V.	2	6960.00
KSG2058(N)	100A / 415V.	1	13450.00
KSG2059(N)	200A / 415V.	1	17850.00
FP			
KSG2060	32A / 415V.	4	3195.00



Change Over Switch (Off Load)

DP			
KSG2061	32A / 240V.	8	2065.00
KSG2062	63A / 240V.	4	5465.00
KSG2063	100A / 240V.	2	8315.00
TP			
KSG2064	32A / 415V.	4	2545.00
FP			
KSG2065	16A / 415V.	6	2460.00
KSG2066	32A / 415V.	4	3115.00
KSG2067	63A / 415V.	2	8320.00
KSG2068	100A / 415V.	1	13200.00
FP (Knife Type)			
KSG2069	63A / 415V.	2	13240.00
KSG2070	100A / 415V.	2	13980.00
KSG2071	200A / 415V.	1	26410.00
KSG2072	320A / 415V.	1	30995.00





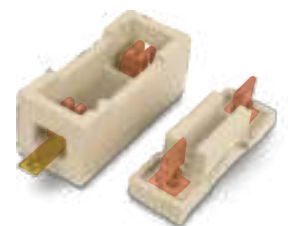
Porcelain Fuse Units

Item Code	Rating / Amps.	Type	Pkg. Unit	DLP. Per Unit (₹)
KSG2023	16A / 240V.	Pilot	120	87.00
KSG2024	16A / 415V.	Pilot	80	156.00
KSG2025	32A / 415V.	Excell	40	243.00
KSG2025H	32A / 415V.	Excell Handle Type	40	243.00
KSG2026	63A / 415V.	Excell	18	608.00
KSG2026H	63A / 415V.	Excell Handle Type	18	608.00
KSG2027	100A / 415V.	Excell	12	1133.00
KSG2028	200A / 415V.	Excell	8	1945.00
KSG2077	200A / 415V.	Fitting with legs	3	2210.00
KSG2029	300A / 415V.	Fitting with legs	3	2815.00
KSG2030	500A / 415V.	Fitting with legs	3	3510.00



TURBO SERIES

KSG2031	63A / 415V.	Turbo	20	565.00
KSG2032	100A / 415V.	Turbo	12	1390.00
KSG2033	200A / 415V.	Turbo	8	2850.00
KSG2034	200A / 415V.	Fitting with legs	8	3295.00



Sheet Metal Cut-outs

KSG2035	16A / 240V.		40	330.00
KSG2036	32A / 415V.		20	530.00
KSG2037	63A / 415V.		6	1295.00
KSG2038	100A / 415V.		6	1940.00

HSN Code - 85365010

Reverse Forwarding Switch

Plastic Handle

KSG2039	16A / 415V.		30	690.00
KSG2040	25A / 415V.		20	1150.00
KSG2041	32A / 415V.		20	1890.00



Metal Handle

KSG2042	16A / 415V.		30	860.00
KSG2043	25A - 32A / 415 V.		20	1485.00



HSN Code - 85369030

Busbar Chamber

KSG2046	32 A/415V.	4 Way	8	2170.00
KSG2047	63 A/415V.	4 Way	6	2800.00
KSG2048	100 A/415V.	4 Way	4	4400.00
KSG2049	200 A/415V. (JR)	4 Way	2	6605.00
KSG2079	200 A/415V. (SR)	4 Way	1	7170.00
KSG2080	320 A/415V.	4 Way	1	8500.00
KSG2081	400 A/415V.	4 Way	1	12935.00
KSG2082	630 A/415V.	4 Way	1	14420.00



HSN Code - 85361020

HRC Fuse Holder

Without HRC Fuse/Suitable for Bolted type HRC Fuse

KSG2073	20Amp.		120	257.00
KSG2074	32Amp.		120	330.00
KSG2075	63Amp.		80	500.00
KSG2076	125Amp.		48	1235.00





ReNOVE

Rewireable Switch Fuse (Single Break)
Change Over Switch (Off Load)



Rewireable Switch Fuse (Single Break)

Item Code	Rating / Amps.	Pkg. Unit	DLP. Per Unit (₹)
SPN			
KSG2101	16A / 240V.	18	810.00
KSG2102	32A / 240V.	8	1710.00
DP			
KDG2103	16A / 240V.	18	840.00
KSG2104	32A / 240V.	8	1825.00
KSG2105	63A / 240V.	4	2550.00



Change Over Switch (Off Load)

Item Code	Rating / Amps.	Pkg. Unit	DLP. Per Unit (₹)
DP			
KSG2111	32A / 240V.	8	2065.00
KSG2112	63A / 240V.	4	5465.00



MAGNA
DISTRIBUTION BOARD



SALIENT FEATURES

- Aesthetic new MAGNETIC LOCK.
- Complete Shock Proof by earthing on door for extra protection.
- Equipped with insulated Copper Bus bar rating upto 100A that prevents short circuit current.
- Ample wiring space is provided to ensure proper distribution of Neutral and Earth wires.
- Masking sheet (Cement Guard) offers added safety by preventing cement from entering.
- IP - 43

SPN DOUBLE DOOR					ø 26+32, K'OUT TOP/BOTTOM	ø 32, K'OUT LH/RH SIDE
No. of Ways	CAT. No.	A	B	C		
4	KDB3310	149	89	179	(2+1) / (2+1) Nos.	1 / 1 No.
6	KDB3311	172	112	202	(2+1) / (2+1) Nos	1 / 1 No.
8	KDB3312	249	189	279	(2+1) / (2+1) Nos	1 / 1 No.
12	KDB3313	321	261	351	(4+1) / (4+1) Nos	1 / 1 No.
16	KDB3314	393	333	423	(4+1) / (4+1) Nos	1 / 1 No.

Distribution Board

Item Code	No. of Ways	To Accommodate Incoming + Outgoing	Pkg. Unit	DLP. Per Unit (₹)
SPN - MCB ENCLOSURE				
KDB3301	1		40	240.00
KDB3302	2		40	240.00
KDB3303	3		24	320.00
KDB3304	4		24	320.00
SPN - SD Sheet Steel Enclosures for Flush/Surface Mounting with Bus Bars Neutral Links & Earth Bar (Without MCB's)				
KDB3306	6	6	16	715.00
KDB3307	8	8	12	820.00
KDB3308	12	12	10	1130.00
KDB3309	16	16	10	1255.00
SPN - DD Sheet Steel Enclosures with Double Door, Detachable Gland Plates for Flush/Surface Mounting with Bus Bars Neutral Links & Earth Bar (Without MCB's)				
KDB3310	4	4	8	1480.00
KDB3311	6	6	8	1755.00
KDB3312	8	8	6	2060.00
KDB3353	10	10	6	2295.00
KDB3313	12	12	4	2515.00
KDB3314	16	16	4	3020.00
TPN - DD Sheet Steel Enclosures with Double Door, Detachable Gland Plates for Flush/Surface Mounting for MCB's fitted with Bus Bars Neutral Links & Earth Bar (Without MCB's)				
KDB3315	4	6+12	4	4145.00
KDB3316	6	8+18	2	4755.00
KDB3317	8	8+24	2	5590.00
KDB3318	12	8+36	2	7245.00
PHASE SELECTOR - DD Sheet Steel Enclosures with Double Door, Detachable Gland Plates for Flush/Surface Mounting for MCB's fitted with Bus Bars Neutral Links & Earth Bar (Without MCB's)				
KDB3319	4	6+12	3	5185.00
KDB3320	4 (with 40 Amp. Rotary Switches & Wiring)	6+12	3	9345.00
KDB3321	4 (with 63 Amp. Rotary Switches & Wiring)	6+12	3	9415.00
KDB3325	6	8+18	2	6630.00
KDB3326	6 (with 40 Amp. Rotary Switches & Wiring)	8+18	2	11810.00
KDB3327	6 (with 63 Amp. Rotary Switches & Wiring)	8+18	2	12425.00
KDB3328	8	8+24	2	7650.00
KDB3329	8 (with 40 Amp. Rotary Switches & Wiring)	8+24	2	12940.00
KDB3330	12	8+36	2	9520.00
KDB3331	12 (with 63 Amp. Rotary Switches & Wiring)	8+36	2	16555.00



Phase Selector

Item Code	Rating	Pkg. Unit	DLP. Per Unit (₹)
KDB3332	25 / 32 Amp.	8	765.00
KDB3333	40 / 63 Amp.	8	1050.00
KDB3334	32 Amp. (With Rotary Switches & Wiring)	8	4570.00
KDB3335	40 Amp. (With Rotary Switches & Wiring)	8	6075.00
KDB3336	63 Amp. (With Rotary Switches & Wiring)	8	6520.00



Plug & Socket Enclosures

In Sheet Steel Enclosures (Without MCB's)

KDB3337	20 Amp. SPN (AC Box) (With Plug & Socket)	20	835.00
KDB3341	20 Amp. SPN Enclosure	40	355.00
KDB3342	20 Amp. SPN Enclosure (With Plug & Socket)	30	795.00



Metal Clad Plug & Sockets

KDB3343	20 Amp.	2 P + E Plug	160	215.00
KDB3346	20 Amp.	2 P + E Socket	160	215.00

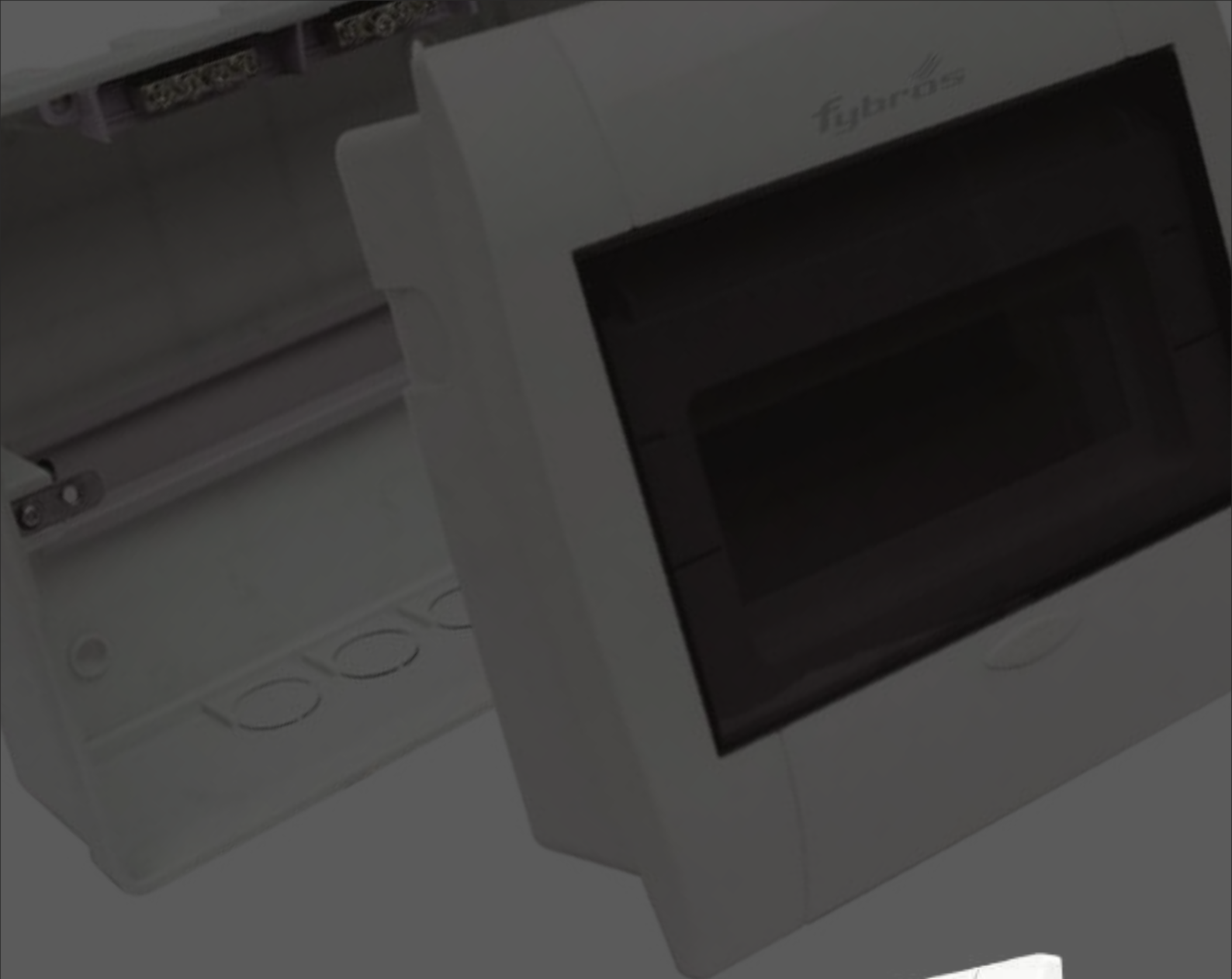


HSN Code - 85365010

Cam Operated Rotary Switch

KDB3349	25 Amp.	80	460.00
KDB3350	32 Amp.	80	575.00
KDB3351	40 Amp.	40	725.00
KDB3352	63 Amp.	40	815.00





INSPIRO
DISTRIBUTION BOARD

Available in Metal & Plastic Base

Distribution Board

METAL BASE

Item Code	No. of Ways	To Accommodate Incoming + Outgoing	Pkg. Unit	DLP. Per Unit (₹)
SPN				
KDB3211	4	4	8	1565.00
KDB3212	6	6	8	1785.00
KDB3213	8	8	6	1990.00
KDB3214	12	12	4	2480.00
KDB3215	16	16	4	3020.00



METAL BASE

Item Code	No. of Ways	To Accommodate Incoming + Outgoing	Pkg. Unit	DLP. Per Unit (₹)
TPN				
KDB3216	4	4 + 12	3	3480.00



PLASTIC BASE

Item Code	No. of Ways	To Accommodate Incoming + Outgoing	Pkg. Unit	DLP. Per Unit (₹)
SPN				
KDB3217	4	4	8	1310.00
KDB3218	6	6	8	1520.00
KDB3219	8	8	6	1715.00
KDB3220	12	12	4	2235.00
KDB3221	16	16	4	2680.00



Distribution Boards

Item Code	No. of Ways	To Accommodate Incoming + Outgoing	Pkg. Unit	DLP. Per Unit (₹)
SPN - DD				
Sheet Steel Enclosures with Double Door, Detachable Gland Plates for Flush/Surface Mounting with Bus Bars Neutral Links & Earth Bar (Without MCB's)				
KDB3035	4	4	8	1320.00
KDB3036	6	6	8	1615.00
KDB3037	8	8	6	1795.00
KDB3038	12	12	6	2175.00
KDB3039	16	16	4	2590.00
KDB3040	10	10	6	1915.00



PHASE SELECTOR - DD

(Without MCB's)

KDB3050 (JR)	4	(without Rotary Switches & Wiring)	4+12	3	4185.00
KDB3051 (JR)	4	(with 40 Amp. Rotary Switches & Wiring)	4+12	3	8200.00
KDB3052 (JR)	4	(with 63 Amp. Rotary Switches & Wiring)	4+12	3	8725.00
KDB3053 (JR)	6	(without Rotary Switches & Wiring)	6+18	2	5260.00
KDB3054 (JR)	6	(with 40 Amp. Rotary Switches & Wiring)	6+18	2	8920.00
KDB3055 (JR)	6	(with 63 Amp. Rotary Switches & Wiring)	6+18	2	9460.00
KDB3056 (SR)	4/6	(without Rotary Switches & Wiring)	6+18	2	5285.00
KDB3057 (SR)	4/6	(with 40 Amp. Rotary Switches & Wiring)	6+18	2	9100.00
KDB3058 (SR)	4/6	(with 63 Amp. Rotary Switches & Wiring)	6+18	2	9625.00



Sheet Steel Enclosures with Double Door, Detachable Gland Plates for Flush/Surface Mounting with Bus Bars Neutral Links & Earth Bar (Without MCB's)

SCION

Meter Box (Enclosure)

KDB3023	32 Amp. SPN	3	2690.00
KDB3024	63 Amp. TPN	2	4350.00



Distribution Boards

Item Code	No. of Ways	To Accommodate Incoming + Outgoing	Pkg. Unit	DLP. Per Unit (₹)
SPN - MCB ENCLOSURE				
KDB3079	1		40	216.00
KDB3080	2		40	216.00
KDB3081	3		24	313.00
KDB3082	4		24	313.00
SPN - SD				
Sheet Steel Enclosures for Flush/Surface Mounting with Bus Bars Neutral Links & Earth Bar (Without MCB's)				
KDB3083	4	4	24	505.00
KDB3084	6	6	20	610.00
KDB3085	8	8	16	690.00
KDB3086	10	10	16	805.00
KDB3087	12	12	12	905.00
KDB3088	16	16	12	1125.00
SPN - DD				
Sheet Steel Enclosures with Double Door, Detachable Gland Plates for Flush/Surface Mounting with Bus Bars Neutral Links & Earth Bar (Without MCB's)				
KDB3089	4	4	12	925.00
KDB3090	6	6	12	1070.00
KDB3091	8	8	10	1235.00
KDB3092	10	10	10	1370.00
KDB3093	12	12	8	1530.00
KDB3094	16	16	8	1835.00
TPN - DD				
Sheet Steel Enclosures with Double Door, Detachable Gland Plates for Flush/Surface Mounting for MCB's fitted with Bus Bars Neutral Links & Earth Bar (Without MCB's)				
KDB3098	4	4+12	4	2610.00
KDB3099	6	4+18	2	3100.00
KDB3100	8	4+24	2	3640.00
KDB3103	12	4+36	2	4535.00
ENCLOSURE				
KDB3101	Rotary Box		20	675.00
KDB3102	MCCB Box		10	1300.00
KDB3104	Rotary Box with indicator		20	765.00
PHASE SELECTOR - DD				
KDB3105	4 (without Rotary Switches & Wiring)	4+12	2	3380.00
KDB3106	4 (with 40 Amp. Rotary Switches & Wiring)	4+12	2	6400.00
KDB3107	4 (with 63 Amp. Rotary Switches & Wiring)	4+12	2	6920.00
KDB3108	6 (without Rotary Switches & Wiring)	6+18	2	3990.00
KDB3109	6 (with 40 Amp. Rotary Switches & Wiring)	6+18	2	6970.00
KDB3110	6 (with 63 Amp. Rotary Switches & Wiring)	6+18	2	7570.00



Distribution Boards



SALIENT FEATURES :

- Aesthetic look of Plastic & Metal Combination.
- Complete Shock Proof by base box earthing.
- Ample wiring Space is provided to ensure proper distribution of Neutral and Earth Wires.

Item Code	No. of Ways	To Accommodate Incoming + Outgoing	Pkg. Unit	DLP. Per Unit (₹)
SPN - DD				
<small>Sheet Steel Enclosures with Double Door, Detachable Gland Plates for Flush/Surface Mounting with Bus Bars Neutral Links & Earth Bar (Without MCB's)</small>				
KDB3411	4	4	12	925.00
KDB3412	6	6	12	1070.00
KDB3413	8	8	10	1235.00
KDB3414	10	10	10	1370.00
KDB3415	12	12	8	1530.00
KDB3416	16	16	8	1835.00



Item Code	No. of Ways	To Accommodate Incoming + Outgoing	Pkg. Unit	DLP. Per Unit (₹)
TPN - DD				
<small>Sheet Steel Enclosures with Double Door, Detachable Gland Plates for Flush/Surface Mounting with Bus Bars Neutral Links & Earth Bar (Without MCB's)</small>				
KDB3417	4	4+12	4	2880.00
KDB3418	6	4+18	2	3665.00
KDB3419	8	4+24	2	4095.00
KDB3420	12	4+36	2	5250.00



ReNOVE

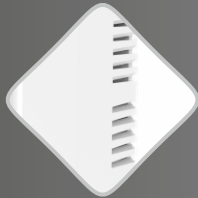
Mini DP MCB With Enclosure



HSN Code - 85362020



INDICATION OF SUPPLY



HEAT VENTILATION



OVERLOAD & SHORT
CIRCUIT PROTECTION



Salient Features

- Compact & elegant enclosure
- Safety assured
- Protection from overload & short circuit
- Breaking capacity, 3kA
- MCB 32 Amp. 240V-50 Hz C-Curve
- Sleek power supply indication
- Quick & easy installation

ITEM CODE	DESCRIPTION	Pkg. Unit	DLP. Per Unit (₹)
KSG 2301	ReNOVE Mini DP MCB With Enclosure	100	480.00



SAFETY BACKED WITH A STYLE STATEMENT

For more than 50 Years, our Electrical products provide safety, security, and serenity to homes and living spaces by manufacturing Smart Electrical Products like Wires & Cables, Switchgear, Switches & Accessories and Lighting Systems that not only fulfills the needs of modern technology and design but also takes innovation to a whole new extent.



c o m p l e t e



At Fyros we manufacture products that are exclusively crafted for modern homes, offices and industries. Our ultra-modern products include Wires & Cables, Switchgears, Switches & Accessories, and Lighting Systems.

s a f e t y



SCAN this QR - Code from your smart phone to visit our website

fybrosofficial



fybrosofficial



@kundancab1968



fybros Official



DELHI

166, Functional Industrial Estate,
Patparganj, DELHI - 110092

UTTAR PRADESH

92/190, 1st Floor, Bhaskar Complex,
Adjacent Hotel S.P. International
Gautam Buddha Marg,
LUCKNOW-226018

Khasra No. 293, Hasanpur Road,
Dinanathpur Puthi, Ghaziabad
UTTAR PRADESH - 201015

NORTH**RAJASTHAN**

C-76, Shastri Nagar,
Near Saboo School,
JAIPUR - 302016

**SOUTH****TAMILNADU**

12/42, Taylors Road,
Kilpauk, CHENNAI - 600010

KERALA

Kudiyirickal Towers, First Floor,
Palarivattom, Edappally Road,
ERNAKULAM - 682025

KARNATAKA

28, Off Mysore Road
Suder Industrial Estate
New Timber Yard Layout
BANGALURU - -560026

GOA

121, Nagarathpet Main Road,
Near Kalamma Temple,
BANGALORE - 560002

EAST**WEST BENGAL**

Flat No. 2F, Crescent Tower,
229 AJC Bose Road, Kolkata - 700020

Plot No. 1369, Sankrail Industrial Park
Dhulagarh, Dist Howrah
KOLKATA - 711302

30, Sevok Road, Santdeep Building
2nd Floor, SILIGURI - 734001

BIHAR

JAK, Pratap Nagar,
Jakariyapur, PATNA - 800001

Jindal House Building, P. K Sahi Lane, 5th Floor
S. P Verma Road, PATNA-800001

JHARKHAND

Plot No. 2072, Near MS Dhoni Farm House,
Vill-Simaliya, PS-Ratu,Daladili Chowk,
RANCHI - 835222

ASSAM

Dhiraj Tumung Compund,
Dag No. 102, Pamohi - DPS Road
GUWAHATI - 781035

WEST



GUJARAT

722, Khatri Pole,
Opp. Pada Pole, Gandhi Road,
AHMEDABAD-380001

First Floor, Shop No. 82-1,
Paras Chambers, JEAN Compound,
Surendranagar - 363002

MAHARASHTRA

Gala No. 9 & 10, Blue Bell Imperial
Manas Industrial Hub,
Opp. Chinchpada, Valiv Road,
Vasai East, PALGHAR - 401208

Balar Marketing Pvt. Ltd.

217, Functional Industrial Estate,
Patparganj, DELHI - 110 092

Fybros Moddular Pvt. Ltd.

205, 2nd floor,
Orbit Industrial Estate,
Chincholi Bunder Road,
Malad (W) MUMBAI- 400064

Balar Marketing Pvt. Ltd.

12/42, Taylors Road,
Kilpauk, CHENNAI - 600010

H.O.



Our Footprints Across India



Terms & Conditions:

- GST extra as applicable
- Claims of any damages, shortages shall be filed by the Purchaser with the Transporter
- Any disputes are subject to Delhi Jurisdiction
- This price list supersedes all our previous price lists
- Prices are subject to without prior notice

BALAR MARKETING PVT. LTD.

Regd. Corporate Office : 217, Functional Industrial Estate,
Patparganj, Delhi - 110 092, INDIA
Tel.: +91-11-22169644, 47640747
Email: switchgear@fybros.com, Website: www.fybros.com

Dealer / Distributor

TOLL FREE CUSTOMER SUPPORT
1800-270-6334

We shall meet your expectations, if given a chance to serve you with tailor-made products specially developed as per your requirement. Our quality and our services by our highly dedicated workforce shall be available at your doorstep whenever you need.



Information given here is in good faith. BALAR MARKETING PVT. LTD. shall not be liable for any damages arising out of incorrect use.

